



SHOW HOME

4 SISKIN BAY 2,739 SQ FT. SAGE CREEK THE CATALINA A

Features

- 3 Bedroom and 2.5 Bathroom 2-Storey Home
- 21'-6" x 24' Front Attached Garage with Insulated Contemporary Door
- Grand Foyer Entrance with 18' High Ceiling
- Versatile Main Floor Den Towards Front of Home
- Mudroom Entrance from Garage with Closet and Convenient Main Floor Laundry
- Large Kitchen with Island, Wine Fridge and Gas Range
- Quartz Kitchen Countertops and Berkley Maple Cabinets
- 6" Disc Lights and Hanging Pendant Lights in Kitchen
- Double Garden Doors with Transom in Dining Room
- 16'-6" x 12' Rear Composite Deck
- Hardwood Flooring Throughout Main Living Areas
- Second Floor Gallery Overlooking the Foyer
- Large Walk-in Closet in Secondary Bedroom
- Deluxe Primary Suite with Double Door Entrance and Private Ensuite
- Large Walk-in Closet with Built-in Organization System
- Freestanding Soaker Tub, Glass & Tile Shower with Rainshower Head, and Private Water Closet in Deluxe Ensuite
- Double Vanities with Sink and Medicine Cabinet
- Poured Piled Concrete Foundation
- Lower Level of Home Optional to Develop
- 1-2-5-10 Year New Home Warranty Program

JACK HOOD

Rancho Realty Services (Manitoba) Ltd.
New Home Sales Consultant

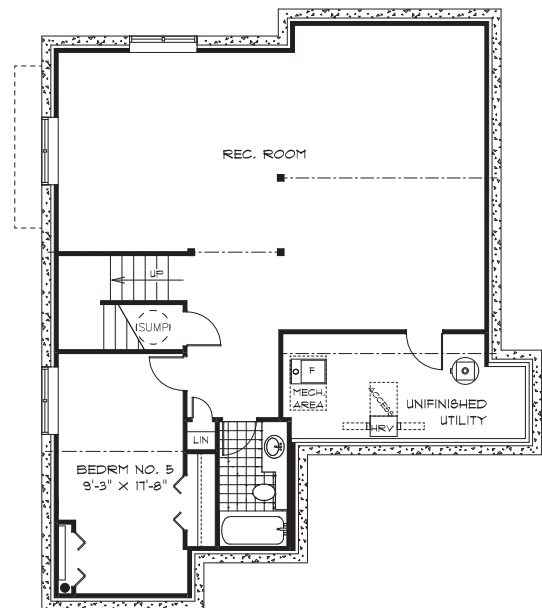
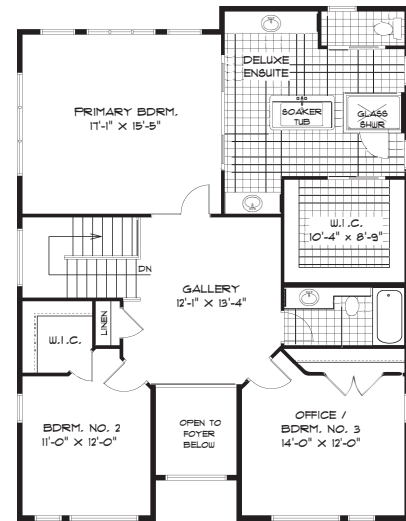
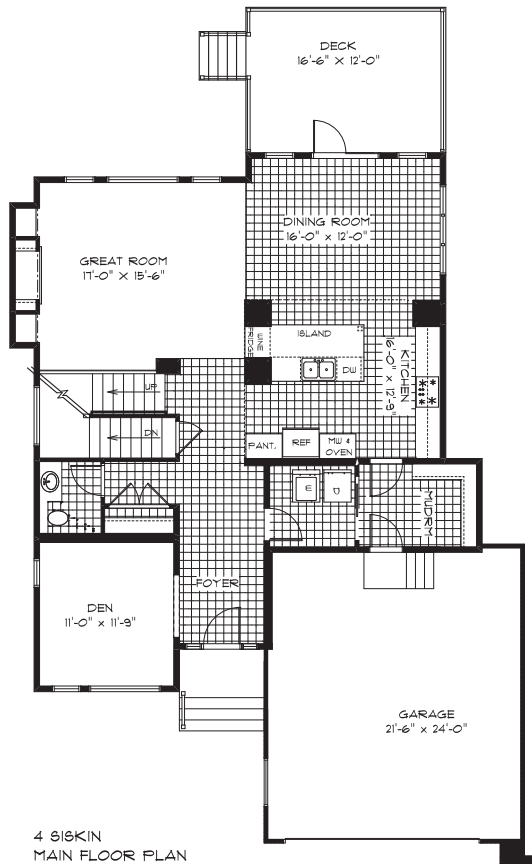
204-299-8100
jhood@qualico.com

**Sterling
HOMES**

A QUALICO Company

4 SISKIN BAY

The Catalina 4175 A
2,739 SQ FT



Plans and prices are subject to change without notice. The builder reserves the right to change material or specifications without notice, but guarantees for equal or greater value. Room dimensions illustrated are approximate. Garage dimensions are exterior. Illustrations are artist concepts and may vary.

SterlingHomesWpg.com

**Sterling
HOMES**
A QUALICO Company