



QUICK POSSESSION HOME

4 BRIDLEWOOD WAY 1,682 SQ. FT. OAK BLUFF

THE MONTARA B

Features

- 3 Bedroom and 2 Bathroom Bungalow Home
- 33'-6" x 20'/22' Triple Car Front Attached Garage with Insulated Door
- Covered Concrete Front Entrance
- Black PVC Windows (excluding basement windows)
- Convenient Main Floor Laundry in Mudroom
- Spacious Kitchen with Island and Pantry
- Venmar Stainless Steel Pyramid Hood Fan
- 6" Disc Lights in Kitchen and Great Room
- Hanging Pendant Lights above Kitchen Island
- 3" Flat Casings and 4" Flat Baseboards
- Built-in Gas Fireplace and Entertainment Unit with Floating Shelves
- 6'-6" x 10' Covered Deck at Rear
- Primary Bedroom with Private Ensuite and Walk-in Closet
- 5' Shower with Niche and Frameless Shower Door in lieu of Standard 1-Piece Tub
- Double Sinks Provided in Ensuite
- Painted Front and Overhead Garage Doors
- Steel Beam in Lower Level
- 9' Basement Wall Height
- Poured Piled Concrete Foundation
- Lower Level of Home Optional to Develop
- 1-2-5-10 Year New Home Warranty Program

DON MCDONALD

Coldwell Banker Preferred Real Estate
New Home Sales Consultant
204-981-9544
dmcdonald@qualico.com

LISA CASTRO

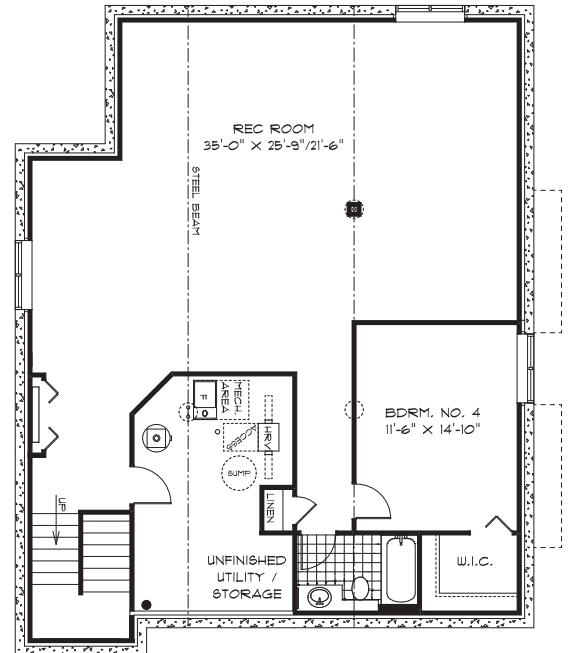
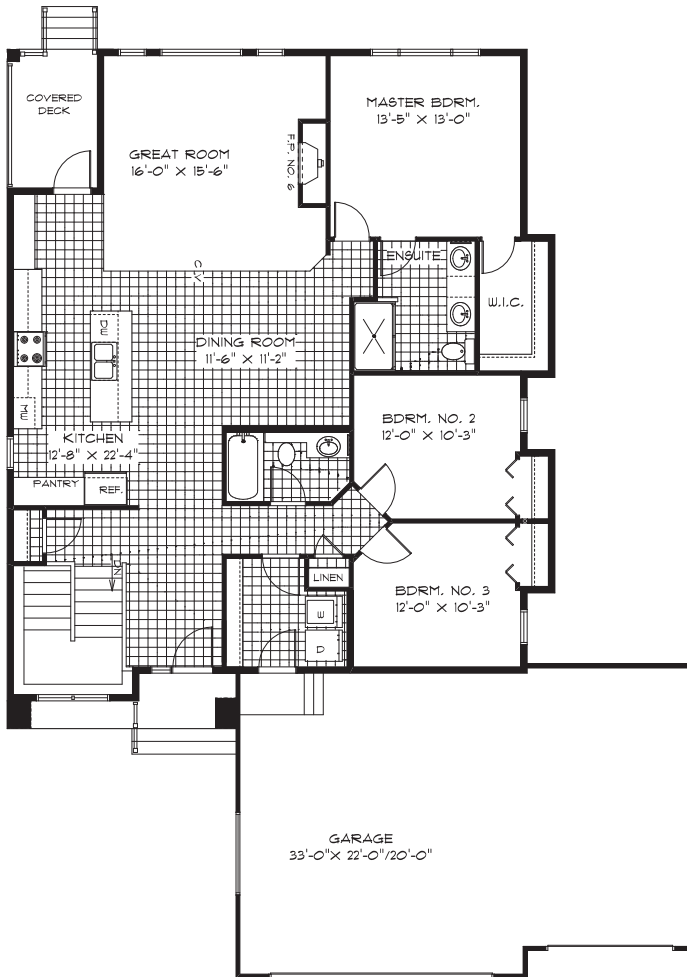
Coldwell Banker Preferred Real Estate
New Home Sales Consultant
204-952-2675
lcastro@qualico.com

Sterling
HOMES

A QUALICO Company

4 BRIDLEWOOD WAY

The Montara 4146 B
1,682 SQ FT



Plans and prices are subject to change without notice. The builder reserves the right to change material or specifications without notice, but guarantees for equal or greater value. Room dimensions illustrated are approximate. Garage dimensions are exterior. Illustrations are artist concepts and may vary.

SterlingHomesWpg.com

**Sterling
HOMES**

A QUALICO Company