



SHOW HOME

12 STONE HEARTH 1,839 SQ FT. OAK BLUFF THE GRANVILLE B

Features

- 3 Bedroom and 2 Bathroom Bungalow Home
- 34'-6" x 24'/22' Front Attached Triple Car Garage
- Covered Concrete Front Porch Entrance with Glass Railing
- Versatile Den and Convenient Main Floor Laundry in Mudroom
- Large Kitchen with Double Pantries and 9'-6" Island with Eating Lip
- Quartz Kitchen Countertops and Ceramic Tile Backsplash
- Maple Kitchen Cabinets with Glass Inserts in Upper Cabinets
- Hardwood Flooring Throughout Main Living Areas
- Spacious Dining Area with Double Garden Doors
- 6" Disc Lights in Kitchen and Great Room
- Hanging Pendant Lights and Undercabinet Lighting in Kitchen
- Built-in Gas Fireplace and Entertainment Unit with Stone Surround and Mantle & Shelves
- 25' x 8'/14' Open Composite Deck at Rear
- Wood Railing at Staircase
- Primary Bedroom with Private Ensuite and Walk-in Closet
- Glass & Tile Shower and Freestanding Soaker Tub in Ensuite
- Garden Door Access to Rear Deck from Primary Bedroom
- Smart Home Package Included
- Poured Piled Concrete Foundation
- Lower Level of Home Optional to Develop
- 1-2-5-10 Year New Home Warranty

DON MCDONALD

Coldwell Banker Preferred Real Estate
New Home Sales Consultant

204-981-9544

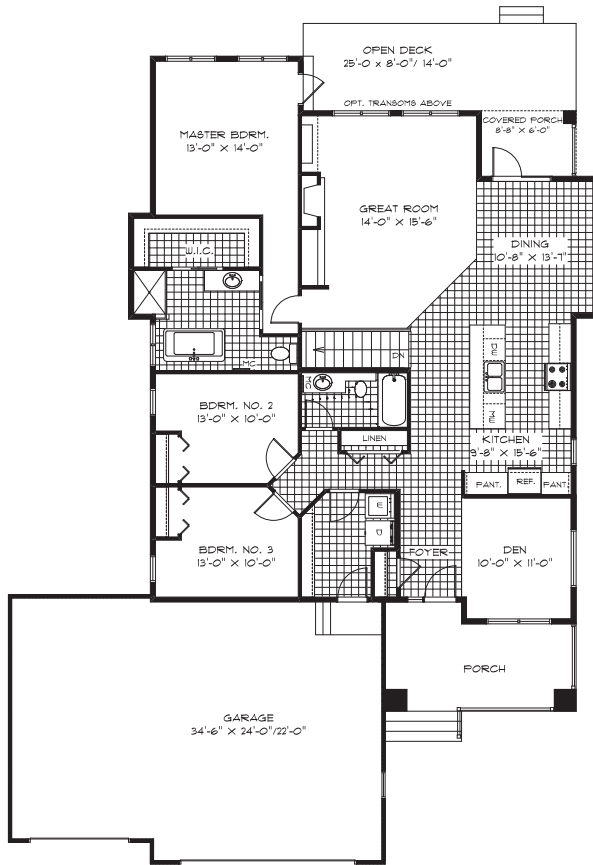
dmcDonald@qualico.com

**Sterling
HOMES**

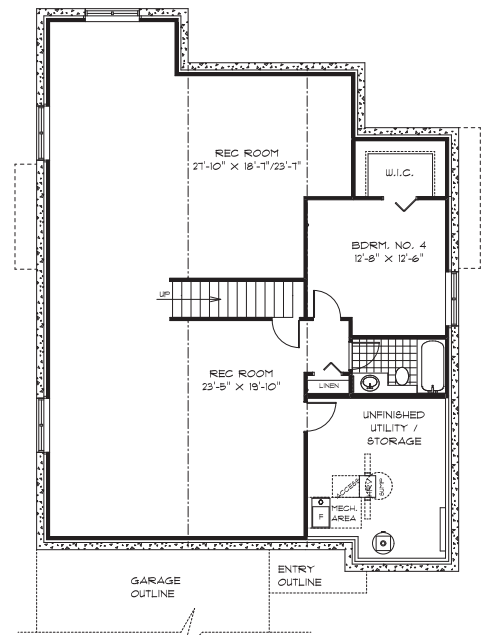
A QUALICO Company

12 STONE HEARTH

The Granville 4151 B
1,839 SQ FT



12 STONE HEARTH
(1839 SQ. FT.)



12 STONE HEARTH
OPT. LOWER LEVEL FLOOR PLAN
(FINISHED AREA 1321 SQ. FT.)

Plans and prices are subject to change without notice. The builder reserves the right to change material or specifications without notice, but guarantees for equal or greater value. Room dimensions illustrated are approximate. Garage dimensions are exterior. Illustrations are artist concepts and may vary.

SterlingHomesWpg.com

**Sterling
HOMES**

A QUALICO Company